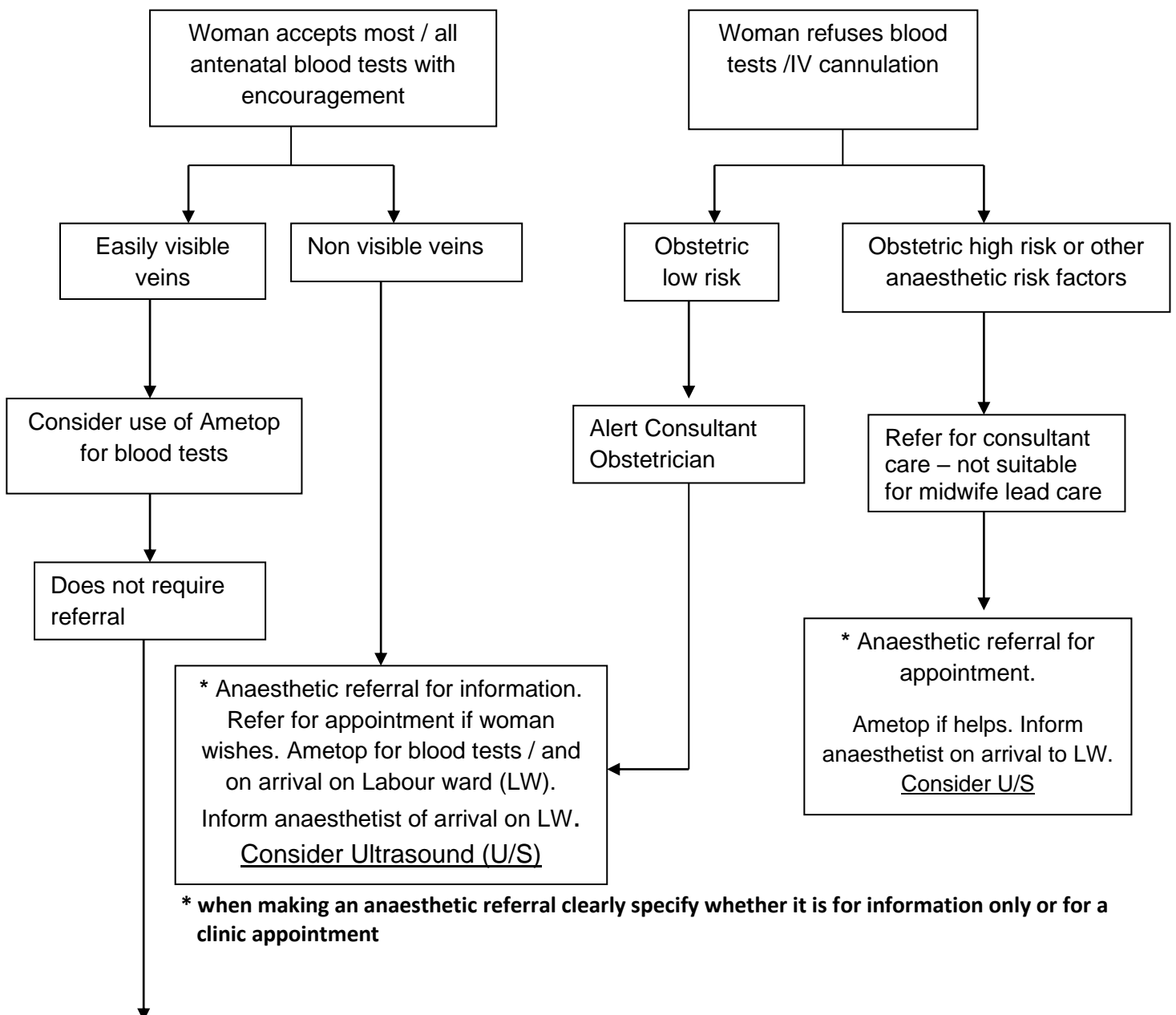


**REFERRAL PATHWAY FOR WOMEN WHO EXPRESS A FEAR OF NEEDLES  
 SUMMARY CLINICAL GUIDELINE**

Reference No.: UHDB/AN/09:22/P3

**The midwife to discuss with the woman the reasons for having tests carried out during pregnancy / IV cannulation during labour with risks explained in the event she refuses.**



**\* when making an anaesthetic referral clearly specify whether it is for information only or for a clinic appointment**

It may be appropriate to cannulate prophylactically on LW. Ametop should be applied under an occlusive dressing for an hour before venepuncture / cannulation. The effect lasts for 3-4 hours after removal.

Ametop may be applied to the back by an anaesthetist minimum of 30 minutes prior to spinal / epidural.