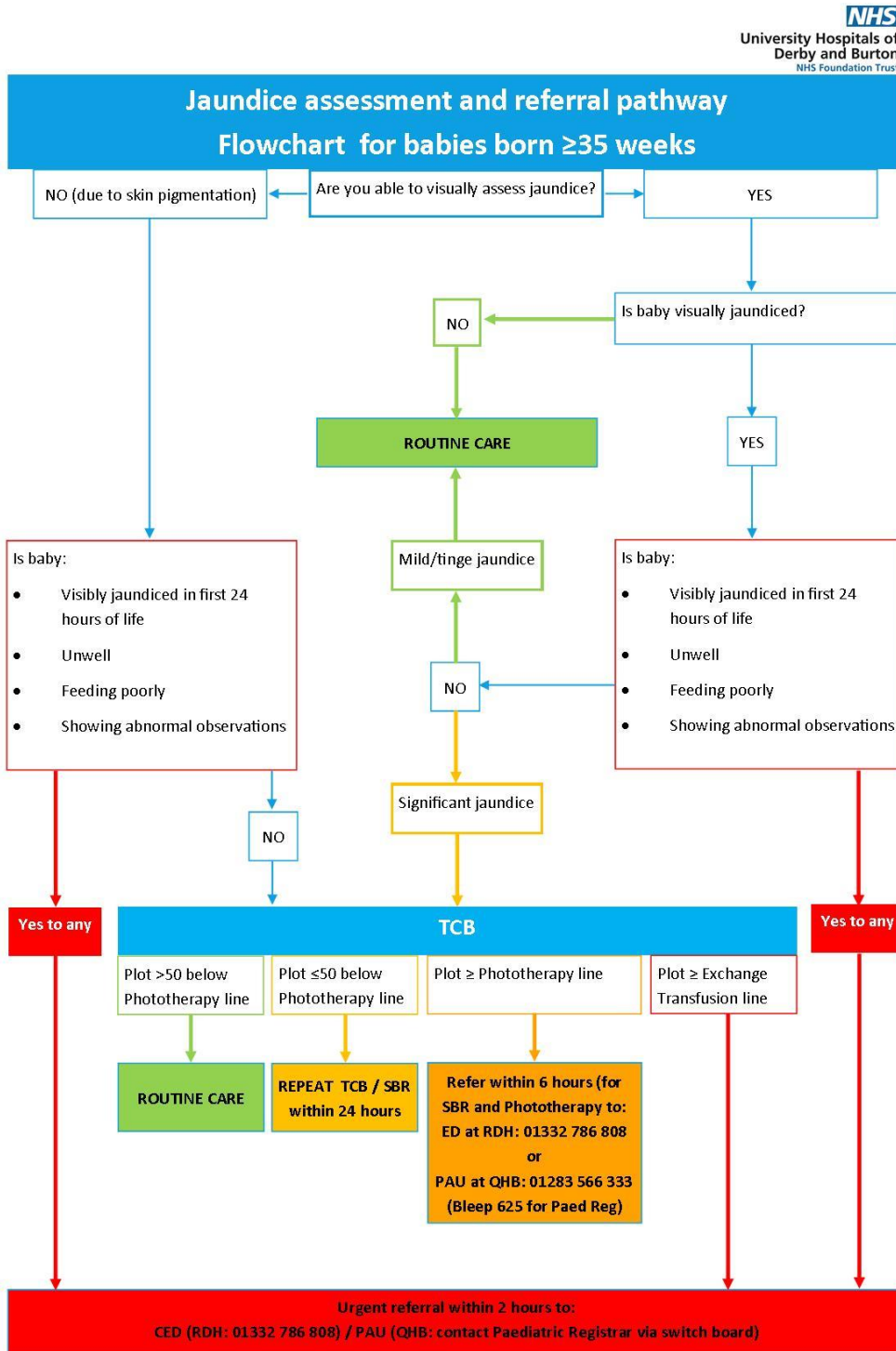


Early Neonatal Jaundice – Maternity & Neonatal/Paediatric Summary Clinical Guideline

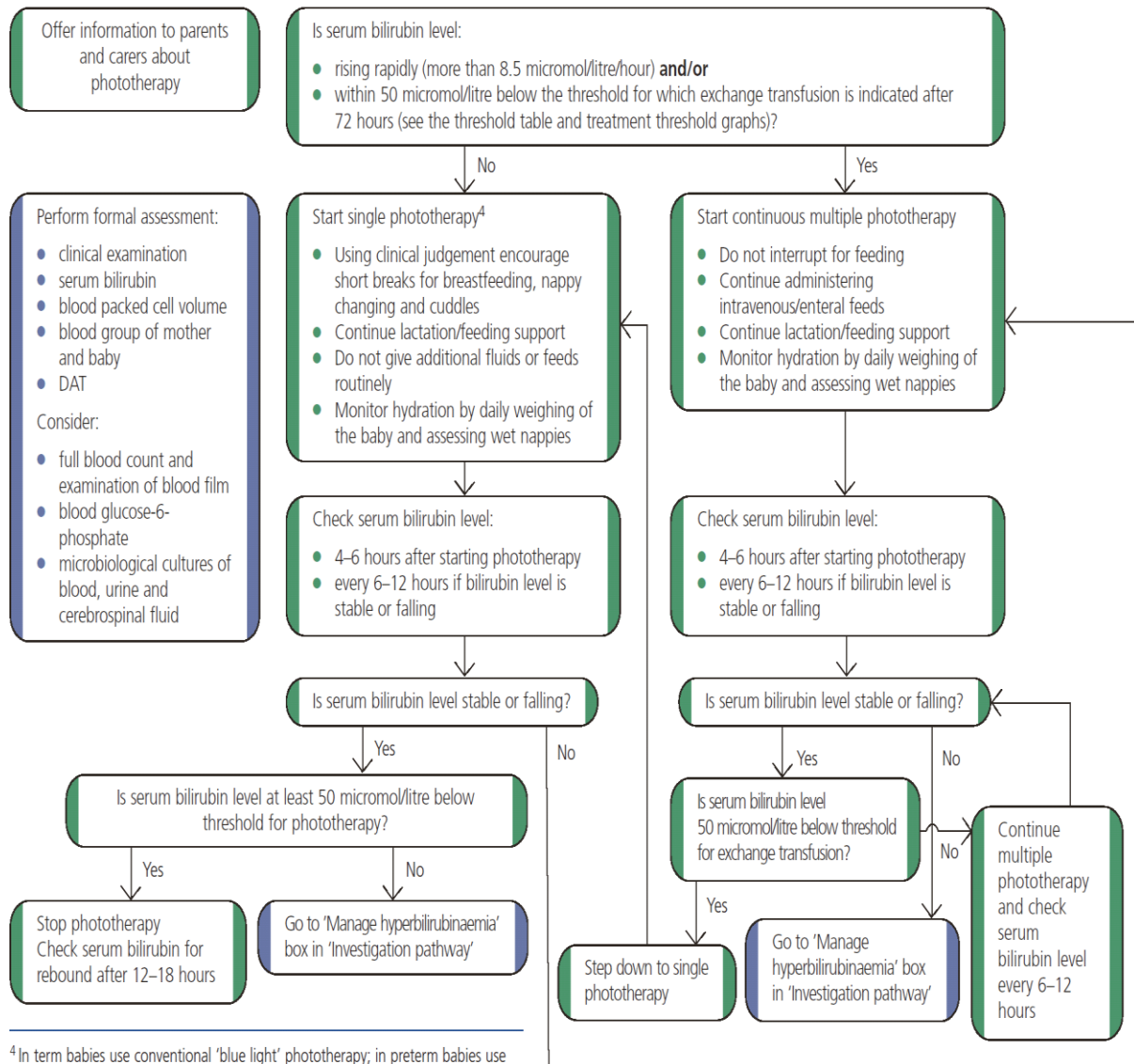
UHDB/Neonatal/04:21/N6



Flowchart supporting Early Neonatal Jaundice Guideline—UHDB May 2021

Phototherapy and Monitoring

Phototherapy pathway



⁴In term babies use conventional 'blue light' phototherapy; in preterm babies use fiberoptic or conventional 'blue light' phototherapy.