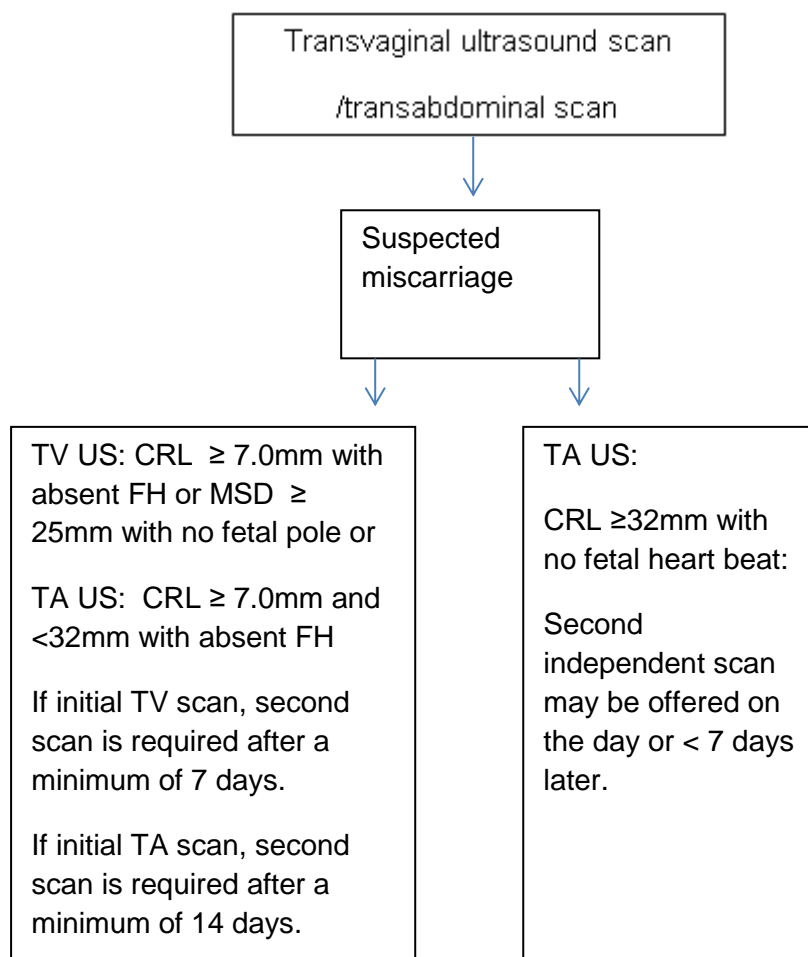


Early Pregnancy Loss Flow Chart - Summary Clinical Guideline

UHDB/Gynae/11:21/M1



Any ultrasound performed by a fetal medicine consultant does not need a rescans/second check.

A second check scan on the day is no longer acceptable to diagnose or confirm a miscarriage. All patients need a rescans at least 7 days later (Unless CRL \geq 32mm on TA Scan and an independent scan has been performed on the same day).

Management Options:

1. Expectant for 7-14 days with UPT after 3 weeks.
2. Medical – Less than 10 weeks or RPOC: 800mcg misoprostol PV/SL/oral; 10+0 weeks onwards 200mg mifepristone oral then return for inpatient management 36-48 hours later for 800mcg misoprostol PV/SL/oral with repeat dose after 3 hours (max 2 doses).
3. Surgical (MVAC/ERPC) – 400mcg misoprostol PV 2 hours pre-procedure. Antibiotic prophylaxis 100mg doxycycline BD for 3 days or 1gram azithromycin PO stat. Anti-D if rhesus negative (500iu).