

Name : _____
 Date of birth: _____
 Hospital No: _____
 (affix hospital label here)



University Hospitals of
 Derby and Burton
 NHS Foundation Trust

DERBY SITES ONLY - GLYCERYL TRINITRATE INTRAVENOUS INFUSION PRESCRIPTION CHART

PRESCRIPTION

Allergies:

Glyceryl Trinitrate: 1mg/1mL	Prescriber's Signature:	Print name:
Rate (0.5 to 10 mL/hour)		Date/time:
Cross reference this prescription on the electronic prescribing system (or medication chart in non-ePMA areas)		

Please use GTN syringe 24mg/24 mL and non- PVC giving set

Date	Time	GTN Batch No.	Prepared by	Checked by

(By symptoms this chart refers to chest pain or symptoms of acute heart failure)

OBSERVATIONS

MONITORING					ADMINISTRATION RECORD		
Time	BP	HR	SatO2	Symptoms Y/N	GTN infusion rate	Residual volume	Nurse/checked signature

1. GTN solution must be administered as 1mg/ml solution in a syringe using an infusion pump.
2. Record baseline observations of blood pressure (BP) and heart rate (HR).
3. The initial infusion rate should be set at 1 mL/hour unless otherwise instructed by medical staff.
4. Adjust the infusion rate according to the guidance in the flowchart below to a maximum of 10ml/hour
5. Re-check observations and symptoms 15 minutes after starting the infusion and after each infusion rate change.
6. If infusion rate is not changed, re-check observation and symptoms every 30minutes for the first hour and then every hour.
7. If the infusion is reduced or stopped due to a low BP inform medical staff (senior doctor).
8. Check the residual (volume remaining in the syringe) at least every hour.
9. **Inform medical staff if systolic BP falls below 90mmHg.**
10. When the infusion is to be discontinued, reduce the rate by 1mL/hour every hour until stopped.

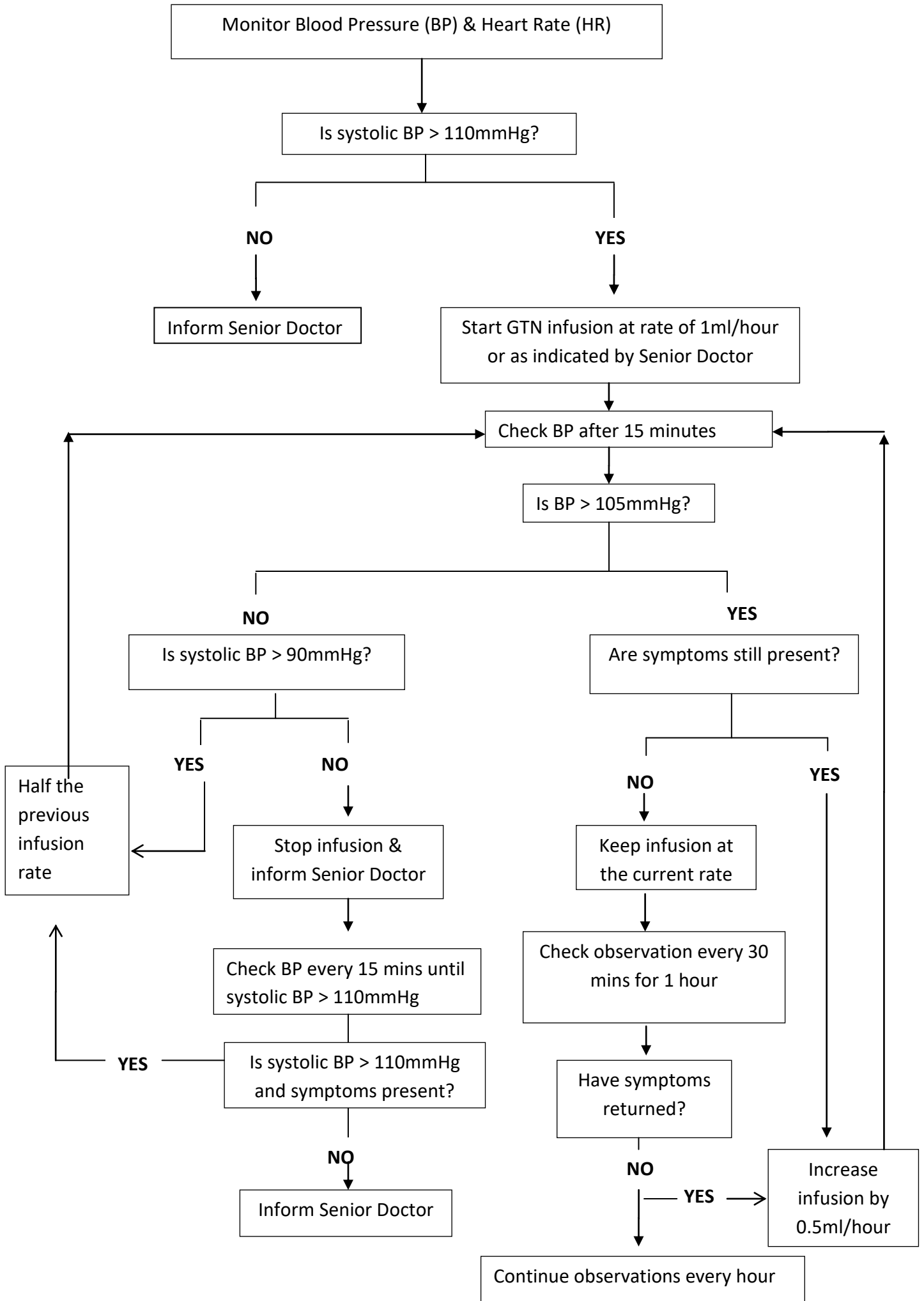
CONTRAINDICATIONS:

- Cardiogenic shock
- Aortic or mitral valve stenosis,
- Hypertrophic obstructive cardiomyopathy
- Severe anaemia,
- Severe cerebral haemorrhage
- Head trauma
- Uncorrected hypovolaemia and hypotensive shock
- Constrictive pericarditis
- Pericardial tamponade
- Toxic pulmonary oedema.
- Conditions associated with an increased intracranial pressure
- Hypersensitivity to the active substance, other nitrates or any of the excipients

• Cautious administration in patients using phosphodiesterase inhibitors type 5 (PDE5) (e. g. Sildenafil, Vardenafil, Tadalafil) may amplify the vasodilator effects of Glyceryl Trinitrate resulting in severe hypotension

SIGNS OF SENSITIVITY TO INFUSION

- Fall in systolic blood pressure ≤ 90 mmHg
- Pallor
- Sweating
- Weak pulse•
- Collapse
- Dizziness
- Nausea



Documentation Control

Development of Guideline:	Alina Paunescu, Emergency Medicine Consultant
Consultation with:	Cardiology (Dr Baron) Pharmacy (Esther Kirk, James Kerr)
Approved By:	ED - 01/09/2020 Documentation Final Approval Group - 11/1/18 Pharmacy/CDCS - 27/10/2020 Medical Division - 03/09/2020
Review Date:	November 2023
Key Contact:	Alina Paunescu